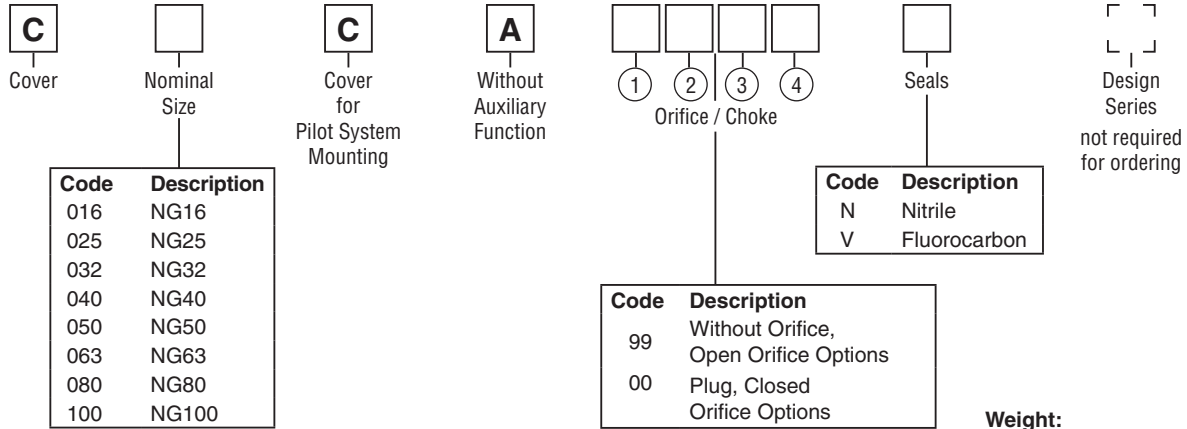


Ordering Information



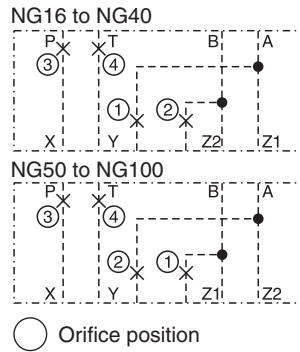
Attention:

For NG50 and larger:
 If pilot system NG06 is used, mount adapter plate PADA 1007/A-B/B-A or PADA 1007/A-A/B-B (NG10 to NG06) on cover.

For orifice recommendations, bolt and seal kits, see Accessories.

Weight:

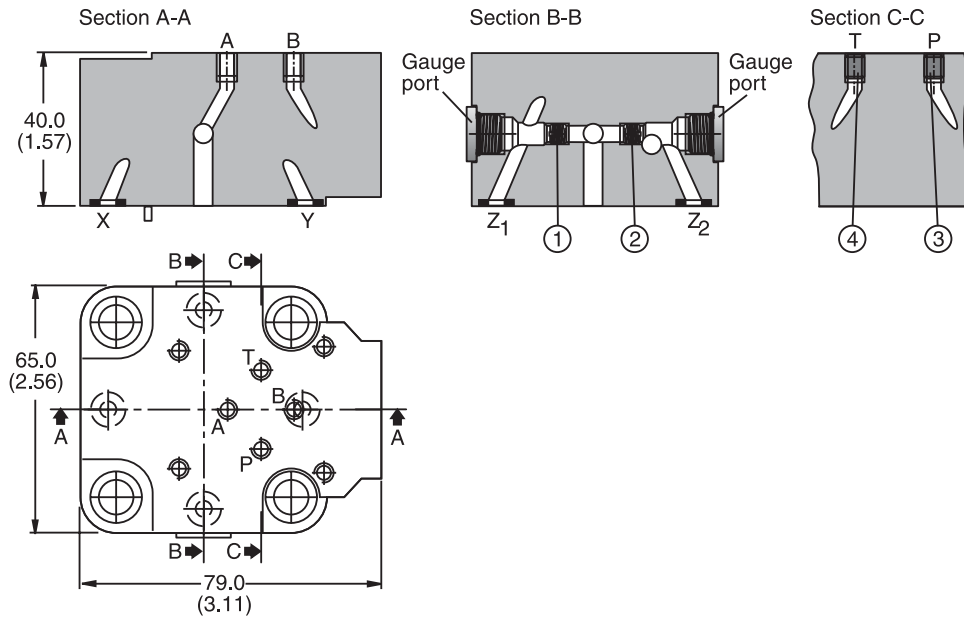
C016C	1.0 kg (2.12 lbs.)
C025C	1.9 kg (4.20 lbs.)
C032C	2.9 kg (6.40 lbs.)
C040C	5.3 kg (11.70 lbs.)
C050C	8.5 kg (18.70 lbs.)
C063C	15.3 kg (33.70 lbs.)
C080C	34.0 kg (75.0 lbs.)
C100C	60.0 kg (132.30 lbs.)



Dimensions

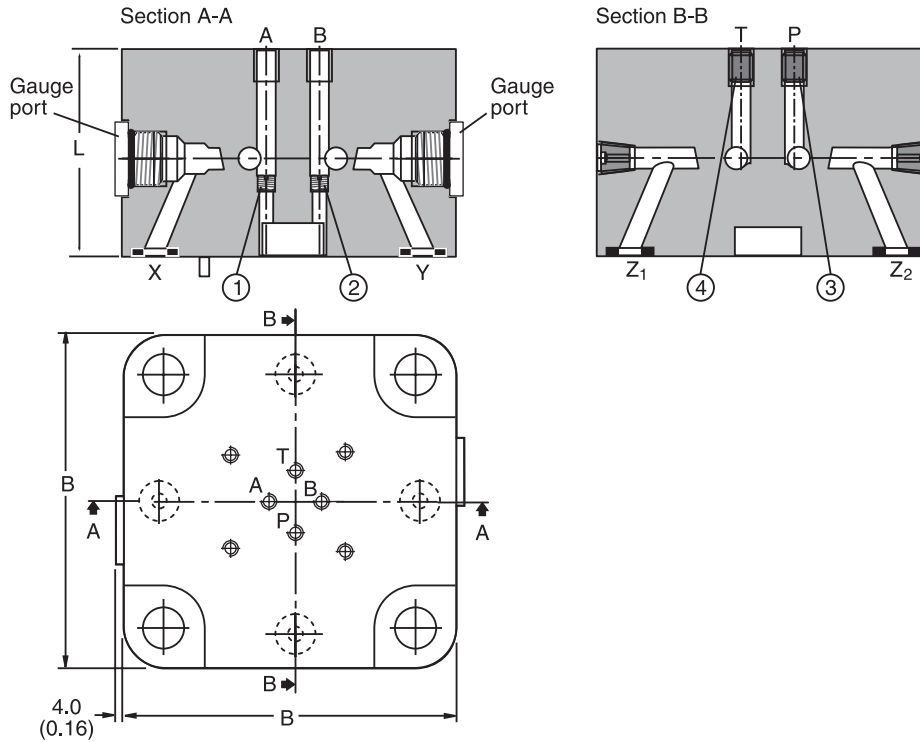
Inch equivalents for millimeter dimensions are shown in (**)

NG16

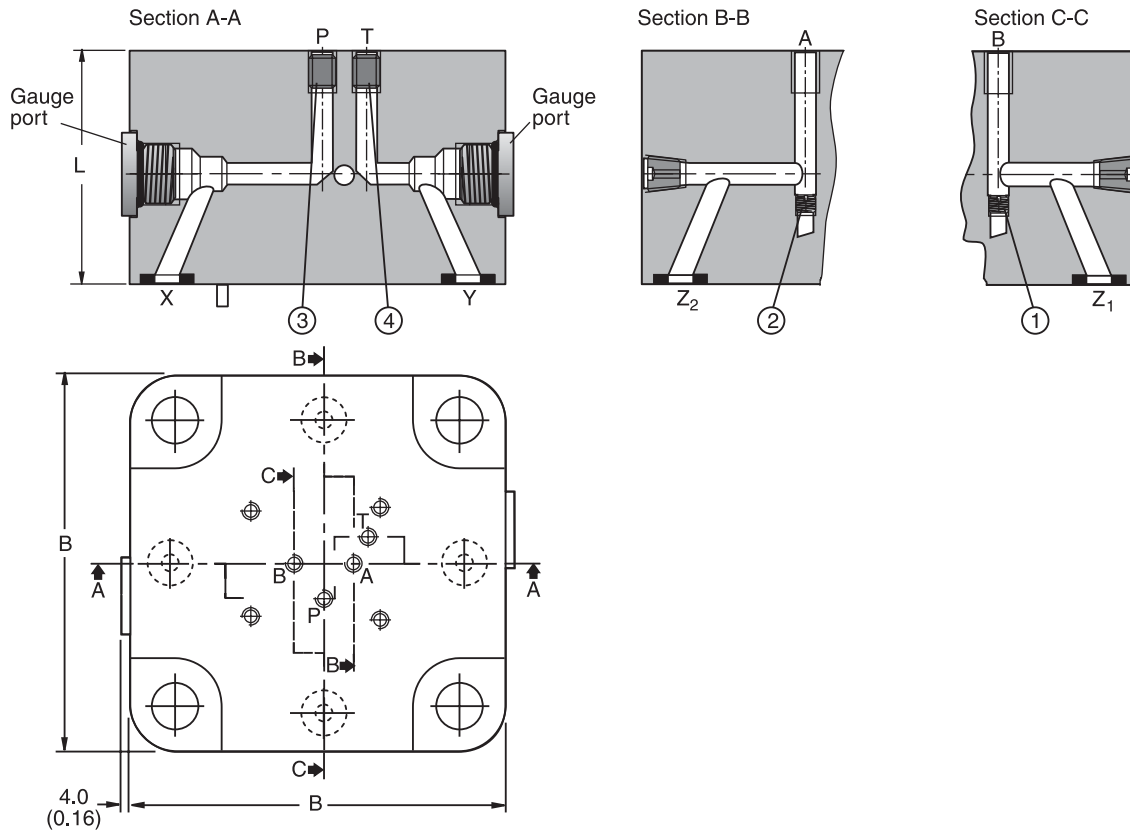


Inch equivalents for millimeter dimensions are shown in (**)

NG25 to NG40

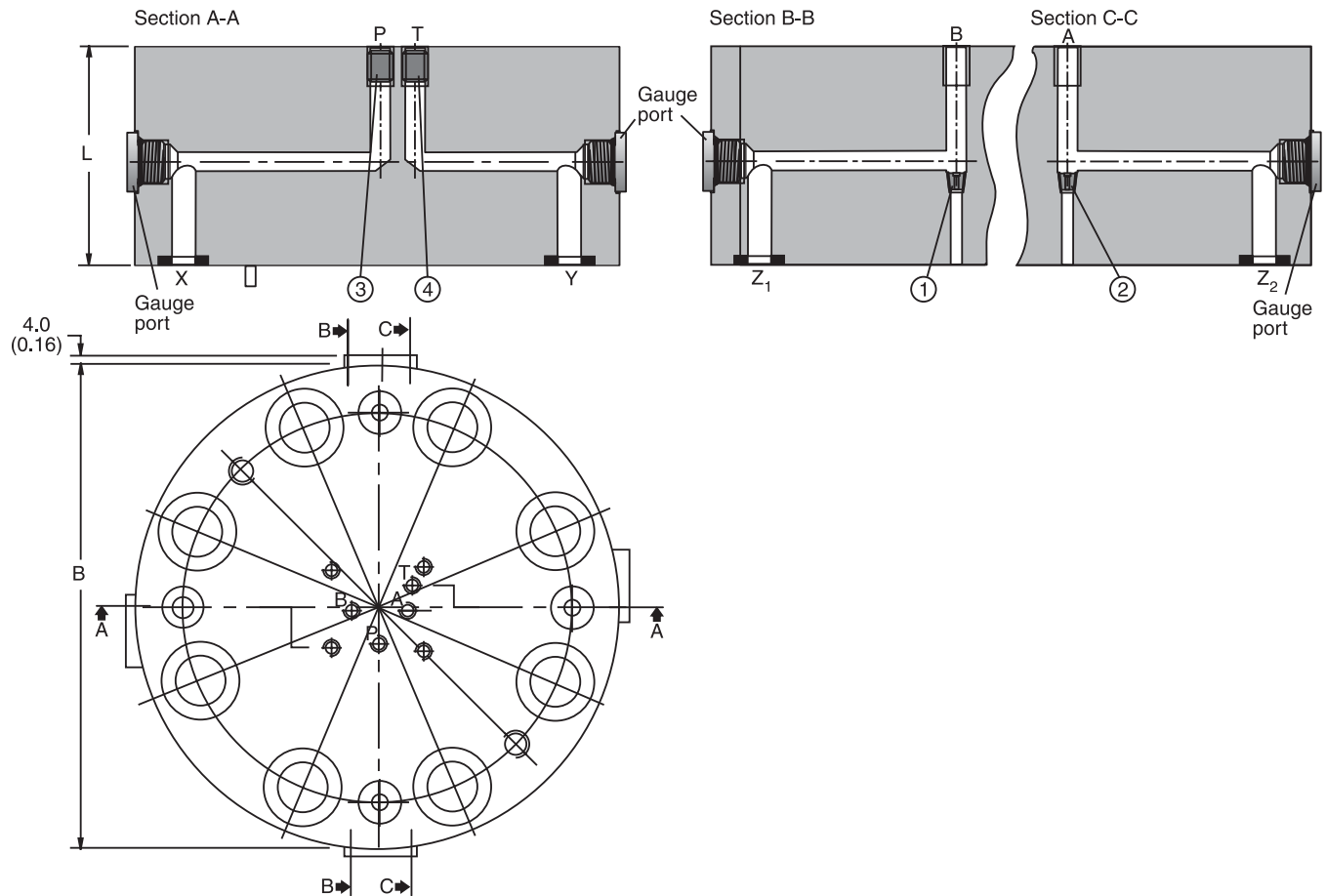


NG50 to NG63



Inch equivalents for millimeter dimensions are shown in (**)

NG80 to NG100



Size	B	L	Gauge Port	Orifice Thread			
				①	②	③	④
NG16	79.0 ¹⁾ (3.11)	40.0 (1.57)	G 1/4"	M5	M5	M5	M5
NG25	85.0 (3.35)	45.0 (1.77)		M5	M5	M6	M6
NG32	102.0 (4.02)	50.0 (1.97)		M5	M5	M6	M6
NG40	125.0 (4.92)	60.0 (2.36)		M5	M5	M6	M6
NG50	140.0 (5.51)	70.0 (2.76)		M6	M6	M8	M8
NG63	180.0 (7.09)	85.0 (3.35)		M6	M6	M8	M8
NG80	Ø250.0 (9.81)	105.0 (4.13)		1/16 NPT	1/16 NPT	M10x1	M10x1
NG100	Ø300.0 (11.81)	120.0 (4.72)		1/16 NPT	1/16 NPT	M10x1	M10x1

¹⁾ Width 65m (2.56 in.)